

Life styling reinvented:

Pre-funding retirement with natural income

For investment professionals only. Capital at risk.
Marketing communication.

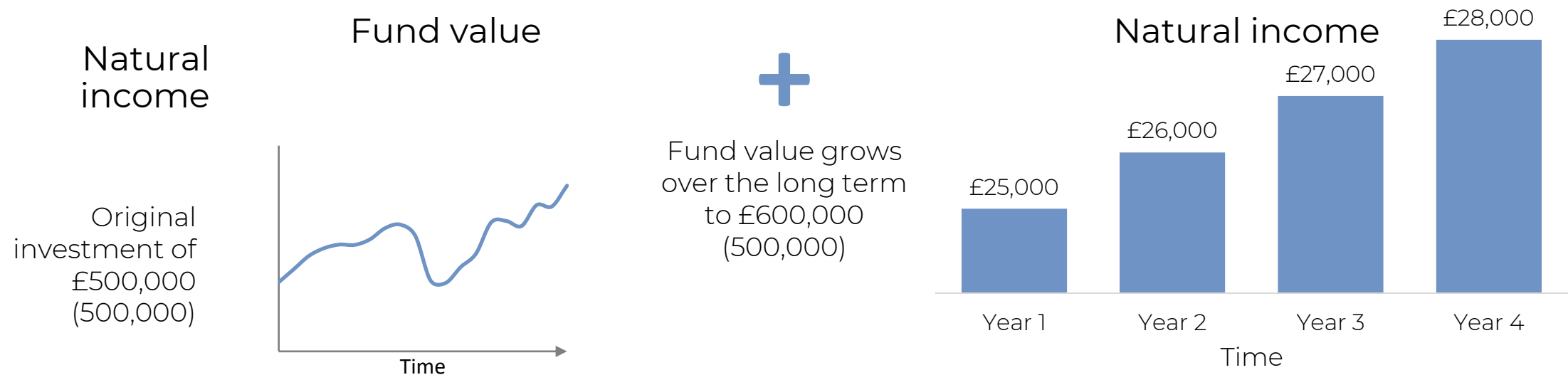
Learning objectives

- 1 Outline the basics of how natural income works
- 2 Explain how natural income can be optimised to overcome some of its common myths
- 3 Demonstrate the client benefits of using natural income in pre-fund retirement

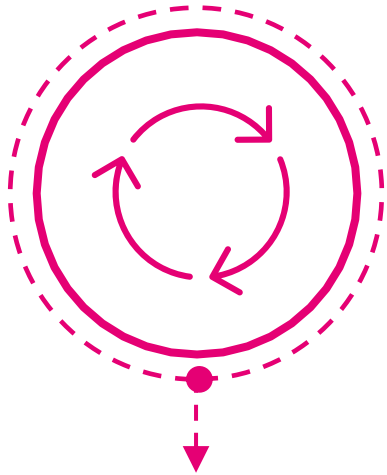
Natural income –
the foundation of a
strong retirement



An example - understanding natural income



Natural Income – Myth busting



Unreliable/volatile
income



Reduced
investment
universe



Natural income not
enough for many
clients

5 ways to optimise income management

- 1 Multi Asset
- 2 Fund structure
- 3 Directly invested
- 4 Active
- 5 Pragmatic asset allocation

Income Life styling – the client experience

From salary...

To living from saved assets



Income Life styling – the current solution

- Life styling often based on a false assumption
- De-risk closer to retirement?
- Risks of uncertain growth outcomes – small timeframe
- Heightened sequencing risk

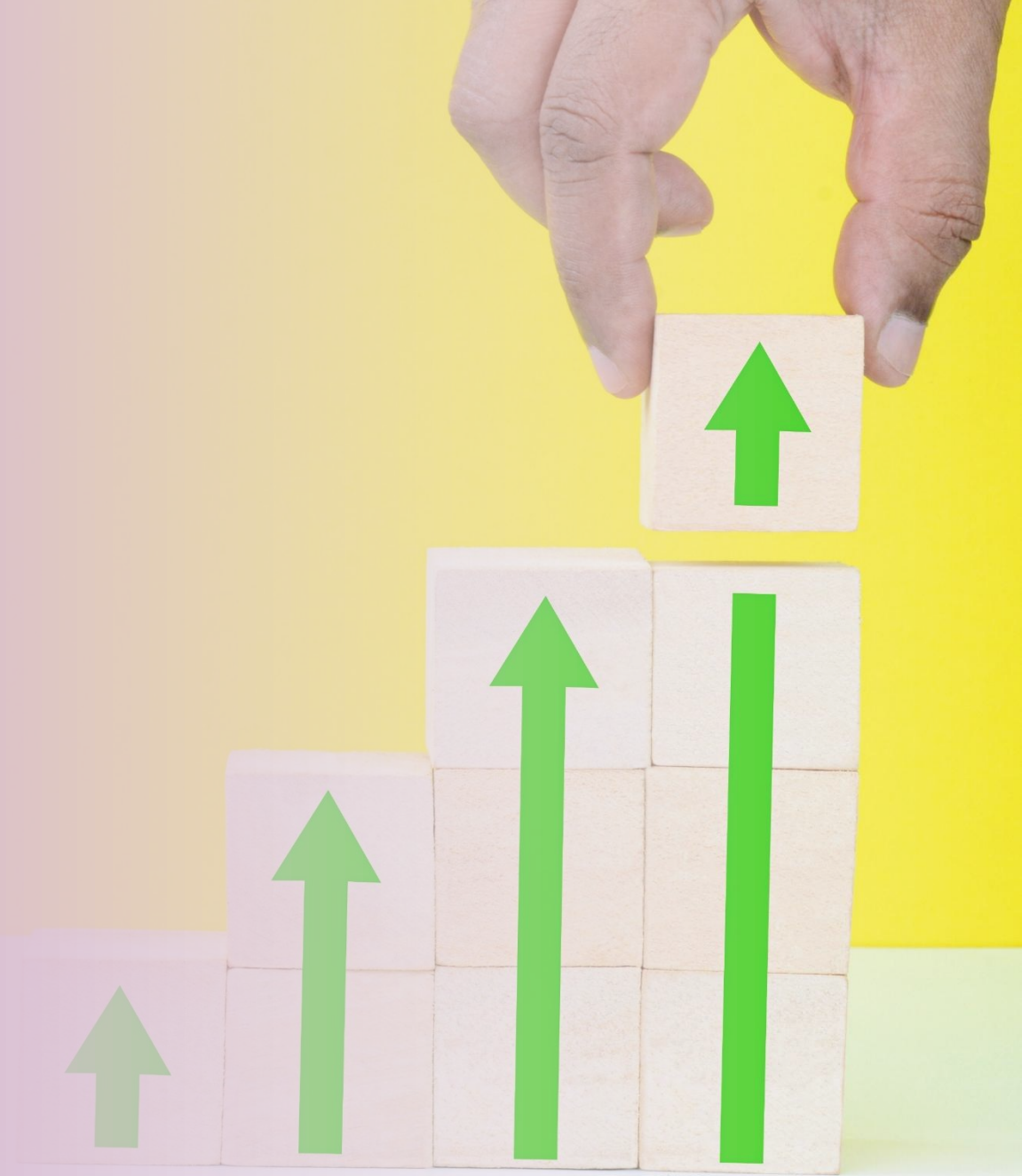


Income Life styling – an existing process for modern day investing

- Reinvesting natural income – buy further units
- Volatility – create a positive from a negative
- Produce regular income pre-retirement – “to try before they buy”
- Retire sooner than later?

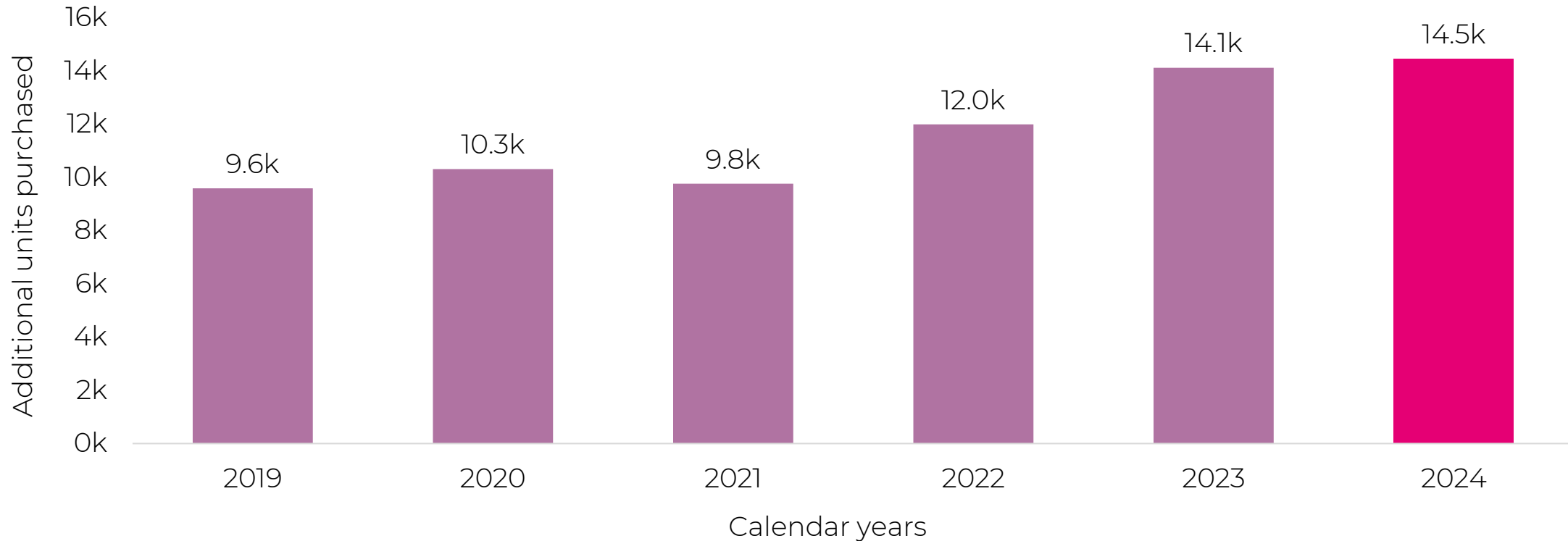


Income life styling –
layering income
payments



Income life styling – make volatility your friend

**PREMIER
MITON**



Based on £250,000 invested within the Premier Miton Cautious Monthly Income Fund in January 2019, income units reinvested

Source: Premier Miton, data as at 31.12.2024.

Past performance is not a reliable indicator of future returns. The level of income paid may fluctuate and is not guaranteed.

Income life styling – the numbers

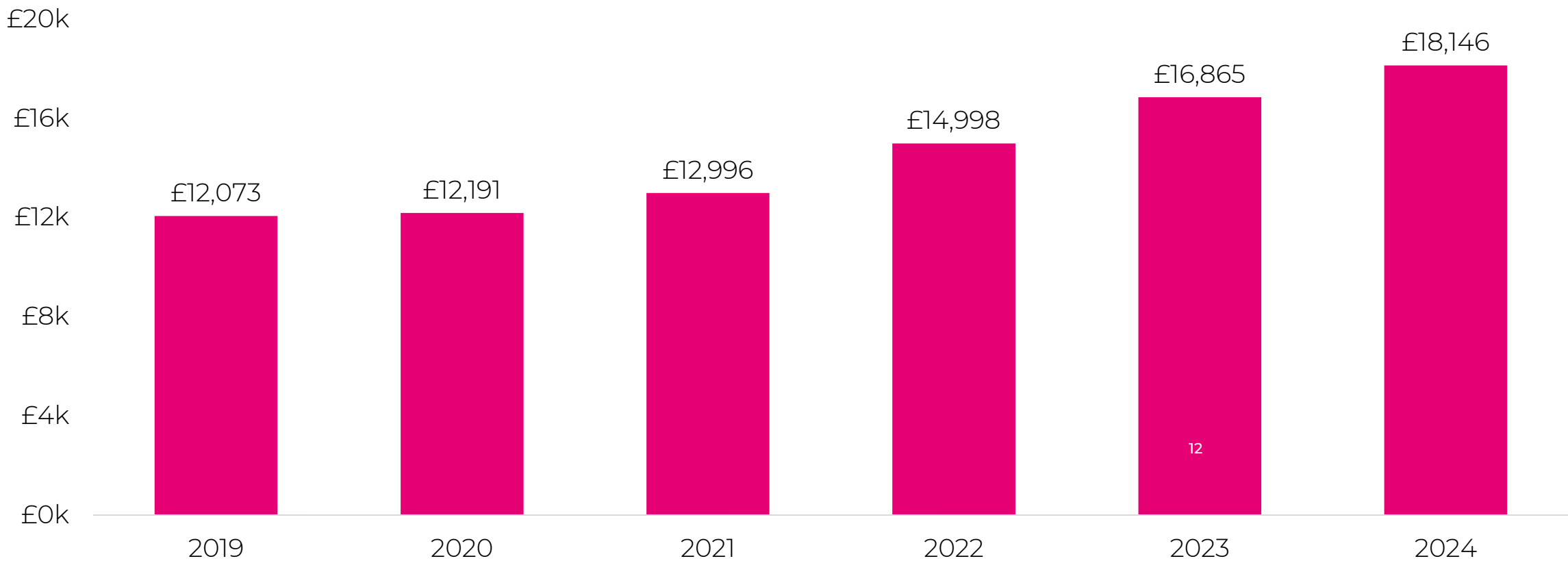
**PREMIER
MITON**

- £250,000 invested
- Jan 2019 – £713 payment
- December 2024 – £1,238 payment
- Income increased every year

+66%

increase in average
annual income

Pre-funding retirement – accumulating income



Source: Premier Miton, data from 31.12.2018 to 31.12.2024. Based on £250,000 invested January 2019 in the Premier Miton Cautious Monthly Income Fund. Income Units reinvested. Past performance is not a reliable indicator of future returns. The level of income paid may fluctuate and is not guaranteed.

Income life styling – post retirement

Illustration of taking the income rather than layering pre-retirement

Income grown:

- From £713 in Jan 2019
- To £936 in December 2024
- A 31% increase

Source: Premier Miton, data from 31.12.2018 to 31.12.2024. Based on £250,000 invested January 2019 in the Premier Miton Cautious Monthly Income Fund. Income Units not reinvested. **Past performance is not a reliable indicator of future returns. The level of income paid may fluctuate and is not guaranteed.**



Learning objectives

- 1 Outline the basics of how natural income works
- 2 Explain how natural income can be optimised to overcome some of its common myths
- 3 Demonstrate the client benefits of natural income to pre-fund retirement

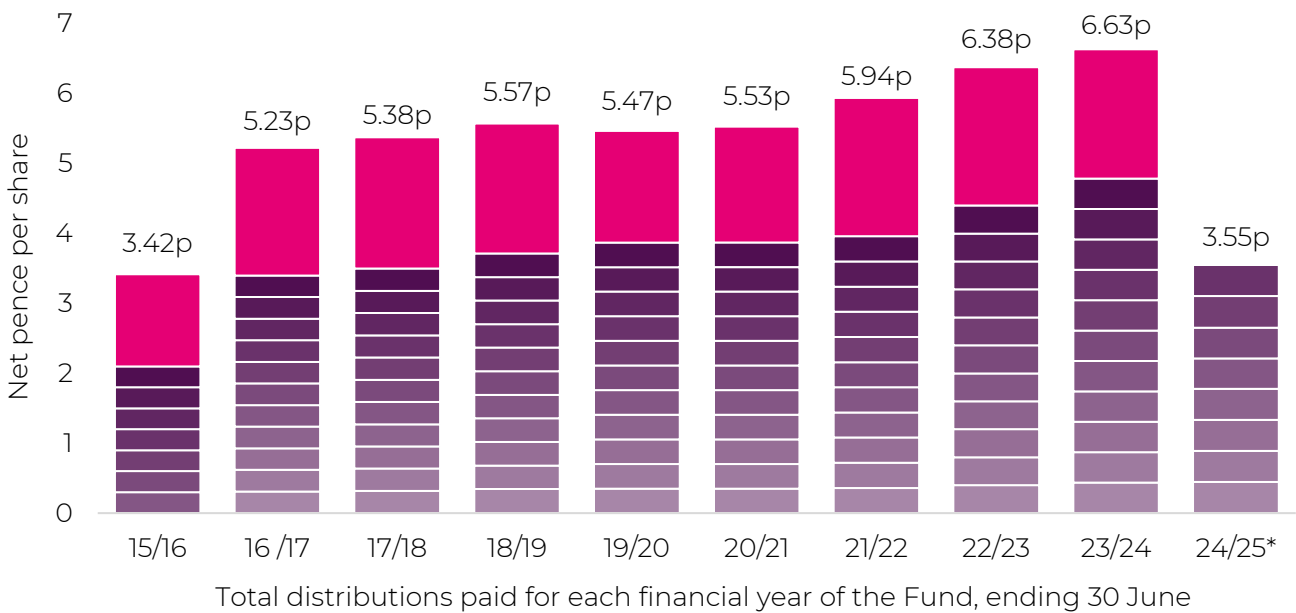
Premier Miton Cautious Monthly Income Fund

Premier Miton Cautious Monthly Income



- 1 Monthly payments
- 2 Growing income
- 3 Multi asset
- 4 Directly invested
- 5 Pragmatic

Income: Annualised historic yield **5.5%¹**



Source: Premier Miton, based on class B income units. In November 2015, the fund's objective was changed to focus on income generation. From this date, income generation, charges were applied to capital and dividend payment frequency changed to monthly. Fund launched: 09.06.2011. ¹Source: Premier Miton, as 30.04.2025. The historic yield reflects distributions declared over the past twelve months, as a percentage of the share price of the fund. It does not include any preliminary charge and investors may be subject to tax on their distributions. *2024/25 distribution history includes eight out of twelve payments. The level of income paid by the fund and the yield are not guaranteed and will fluctuate. Past performance is not a reliable indicator of future returns.

Regular, predictable & growing income



2023/24 Example	XD date	Pay date	Distribution per share
Interim payments 11 equal monthly payments			0.4350p
Final payment	1 Jul 2024	26 Jul 2024	1.8491p
Total paid this fund financial year			6.6341p

Source: Premier Miton, based on class B income units. Total distribution paid for each financial year of the Fund, ending 30 June.
Data correct as at 31.12.2024. The level of income paid by the fund and the yield are not guaranteed and will fluctuate. Past performance is not a reliable indicator of future returns.

Investing for income & capital growth



Positive price momentum is vital

Investing for income & capital growth

**PREMIER
MILTON**



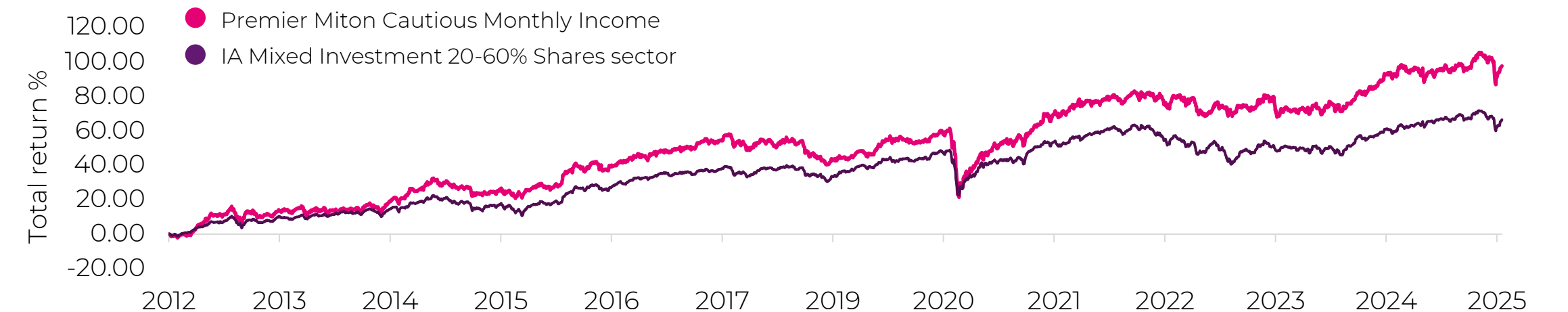
Our initial 1% investment in Meta now leaves us with a close to 1% position in Meta, a similar position in Stellantis and a corporate bond at about 50bps. And most importantly an income of just over £120k per annum - 10% yield on our initial capital¹

¹Data as at 01.03.2024. For illustrative purposes only.

Performance summary



Performance since launch of unit class on 18 October 2012



Total return %	1 year	3 years	5 years	10 years	Class launch
Fund	2.4	10.4	42.8	52.9	97.5
Sector	4.0	7.8	23.3	38.0	66.3

Source: FE Analytics. Based on UK Sterling class B Income Units, on a total return basis to 30.04.2025. Performance is shown net of fees with income reinvested. Fund does not use swing pricing. Performance is based on net income reinvested, bid to bid basis. **Past performance is not a reliable indicator of future returns.**

20

Performance summary

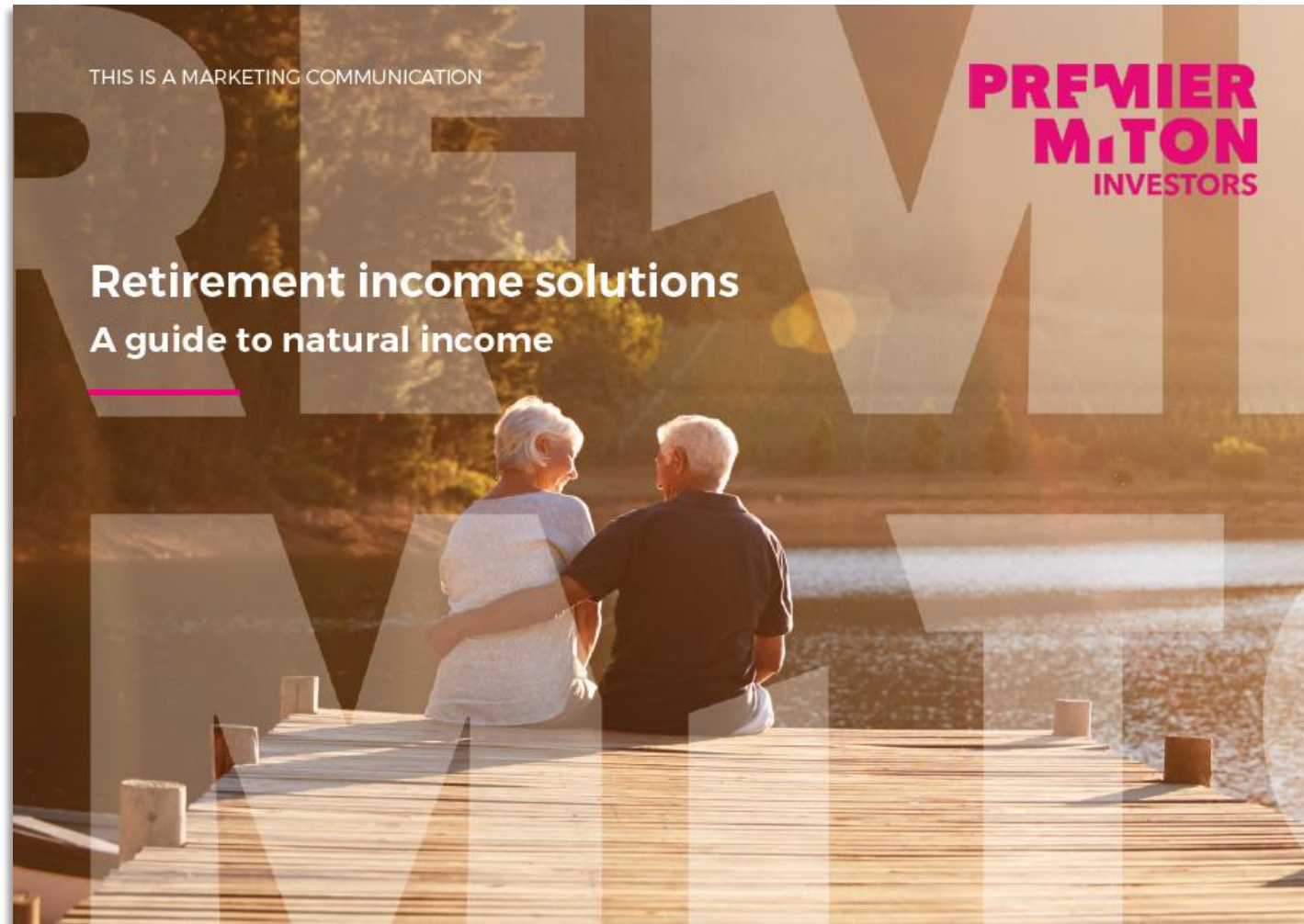


Total return %	30.04.2020 - 30.04.2021	30.04.2021- 30.04.2022	30.04.2022 - 30.04.2023	30.04.2023 - 30.04.2024	30.04.2024 - 30.04.2025
Fund	26.3	2.4	-3.9	12.3	2.4
Sector	15.9	-1.2	-2.6	6.4	4.0

Source: FE Analytics. Based on UK Sterling class B Income units, on a total return basis to 30.04.2025. Performance is shown net of fees with income reinvested. Fund does not use swing pricing. Performance is based on net income reinvested, bid to bid basis.
Past performance is not a reliable indicator of future returns.

A plain English guide to natural income

**PREMIER
M_iTON**



**PREMIER
MITON**
ORIGINAL THINKING

Q&A /
Thank you

 Premier Miton Investors

premiermiton.com

info@premiermiton.com

Watch our videos on **Asset TV**

[www.asset.tv/channel/
premier-miton-investors](http://www.asset.tv/channel/premier-miton-investors)

Regular **INSIGHTS**
on our website

Fund risks

THE PREMIER MITON CAUTIOUS MONTHLY INCOME FUND MAY EXPERIENCE HIGH VOLATILITY DUE TO THE COMPOSITION OF THE PORTFOLIO OR THE PORTFOLIO MANAGEMENT TECHNIQUES USED.

Some of the main specific risks of investing in this fund are summarised here. Further detail is available in the prospectus for the fund.

Fixed Income:

Fixed income investments, such as bonds, can be higher risk or lower risk depending on the financial strength of the issuer of the bond, where the bond ranks in the issuer's structure or the length of time until the bond matures. It is possible that the income due or the repayment value will not be met. They can be particularly affected by changes in central bank interest rates and by inflation.

Equities:

Equities (company shares) can experience high levels of price fluctuation. Smaller company shares can be riskier than the largest companies, companies in less developed countries (emerging markets) can be riskier than those in developed countries and funds focused on a particular country or region can be riskier than funds that are more geographically diverse. These risks can result in bigger movements in the value of the fund. Equities can be affected by changes in central bank interest rates and by inflation.

Other investment risks:

Funds may have holdings in investments such as commodities (raw materials), infrastructure and property as well as other areas such as specialist lending and renewable energy. These investments will be indirect, which means accessing these assets by investing in companies, other funds or similar investment vehicles. These investments can also increase risk and experience sharp price movements. Funds focused on specific sectors or industries, such as property or infrastructure, may carry a higher level of risk and can experience bigger movements in value. Certain investments can be impacted by decisions made by third parties, such as governments or regulators.

Other risks:

There are many other factors that can influence the value of a fund. These include currency movements, changes in the law, regulations or tax, operational systems or third-party failures, or financial market conditions that make it difficult to buy or sell investments for the fund.

Important information



For Investment Professionals only. No other persons should rely on the information contained within. This is a marketing communication.

Investors should refer to the Prospectus and to the Key Investor Information Document (KIID) before making any final investment decisions. A free, English language copy of the Prospectus, KIID and Supplementary Information Document are available on the Premier Miton website, or copies can be requested by calling 0333 456 4560 or emailing contactus@premiermiton.com.

Whilst every effort has been made to ensure the accuracy of the information provided, we regret that we cannot accept responsibility for any omissions or errors.

Any views and opinions expressed here are those of the presenter at the time of presenting and can change; they may not represent the views of Premier Miton and should not be taken as statements of fact, nor should they be relied upon for making investment decisions.

Reference to any investment should not be considered advice or an investment recommendation.

All data is sourced to Premier Miton unless otherwise stated.

This document and all of the information contained in it, including without limitation all text, data, graphs, charts, images (collectively, the "Information") is the property of Premier Fund Managers Limited and/or Premier Portfolio Managers Limited ("Premier Miton") or any third party involved in providing or compiling any Information (collectively, the "Data Providers") and is provided for informational purposes only. The Information may not be modified, reverse-engineered, manipulated, reproduced or distributed in whole or in part without prior written permission from Premier Miton. All rights in the Information are reserved by Premier Miton and/or the Data Providers.

Jurisdiction disclosures:

Ireland: Nothing in these materials constitutes, is intended to constitute, shall be treated as constituting or shall be deemed to constitute, any offer or sale of securities in the Republic of Ireland which would constitute an "offer of securities to the public." It is the responsibility of any person in possession of this document and any related materials to inform themselves of and to observe all applicable laws and regulations of the countries of their nationality, residence, ordinary residence or domicile. If you are in any doubt about the contents of this document, you should consult your financial consultant, stockbroker, lawyer, accountant or other professional adviser. By your acceptance and use of this document you (a) accept and agree to the foregoing; (b) represent that you are qualified as a "professional investor" (see paragraph below) to receive this document; and (c) agree not to copy or circulate this document or any information in them to any other person without the express consent of the Fund. This Fund shall only be marketed to professional investors in Ireland, as defined in the European Union (Alternative Investment Fund Managers) Regulations 2013 (the "Irish AIFMD Regulations"). This Fund shall not be marketed to retail investors, as defined in the Irish AIFMD Regulations. Neither the Fund nor the investment has been authorised by the Central Bank of Ireland. The document and the information contained herein are private and confidential and are for the use solely of the person to whom this document is addressed. If a prospective investor is not interested in making an investment, this document should be promptly returned. This document does not, and shall not be deemed to, constitute an invitation to the public in Ireland to purchase interests in the Fund. No person receiving a copy of this document may treat it as constituting an invitation to them to purchase interests in the Fund or a solicitation to anyone other than the addressee. The offer for sale of interests in the Fund shall not be made by any person in Ireland otherwise than in conformity with the provisions of the European Communities (Markets in Financial Instruments) Regulations 2007 (as amended) and in accordance with any codes, guidance or requirements imposed by the Central Bank of Ireland thereunder.

Important information



Jersey: An investment in the Fund mentioned herein is only suitable for sophisticated investors who understand the risks involved in acquiring such an investment. Neither the Fund nor the activities of any functionary with regard to the Fund are subject to all the provisions of the Financial Services (Jersey) Law 1998.

IOM: Class 2 Licenceholder or Authorised Insurers only. Premier Portfolio Managers Limited is registered in the United Kingdom and regulated by the Financial Conduct Authority. We are not regulated or licensed by the Isle of Man Financial Services Authority and do not have a place of business in the Isle of Man or carry on business in the Isle of Man.

Guernsey: This material has not been filed with the Guernsey Financial Services Commission (the Commission), nor has this material nor the offer relating to the Funds described in this material received approval or authorisation for its circulation or promotion by way of public offer in the Bailiwick of Guernsey. Accordingly, the circulation of the Offer in the Bailiwick of Guernsey is restricted. It may only be circulated by persons licensed to do so by the Commission (the "GFSC") under the Protection of Investors (Bailiwick of Guernsey) Law, 2020 (as amended) (the POI Law) or promoted to those entities licensed under the following Guernsey regulatory laws: the POI Law, the Banking Supervision (Bailiwick of Guernsey) Law, 2020, the Insurance Business (Bailiwick of Guernsey) Law, 2002, as amended, the Insurance Managers and Insurance Intermediaries (Bailiwick of Guernsey) Law, 2002, as amended, the Regulation of Fiduciaries, Administration Businesses and Company Directors, etc (Bailiwick of Guernsey) Law, 2020 by non-Guernsey bodies who (a) carry on such promotion in a manner in which they are permitted to carry on promotion in or from within, and under the law of certain designated jurisdictions which, in the opinion of Commission, afford adequate protection to investors and (b) meet the criteria specified in section 44(d) of the POI Law or pursuant to an unsolicited expression of interest in the Funds from the person(s) receiving.

Marketing communication issued by Premier Miton Investors. Premier Portfolio Managers Limited is registered in England no. 01235867. Premier Fund Managers Limited is registered in England no. 02274227. Both companies are authorised and regulated by the Financial Conduct Authority and are members of the 'Premier Miton Investors' marketing group and subsidiaries of Premier Miton Group plc (registered in England no. 06306664). Registered office: Eastgate Court, High Street, Guildford, Surrey GU1 3DE.

016323/120525

**PREMIER
MITON**
ORIGINAL THINKING